

HISTORY OF A MUSICAL:

The concept for "...Bodoni..." began when Mr. Gagliano, a Benedum Professor of Playwriting at West Virginia University's Division of Theatre, began writing poems, a la "Spoon River Anthology." Frank revealed, "I soon realized that they could possibly be set to music and that they each seemed to be coming from the same town. Or County. My Bodoni County – which I had invented for other works - came to mind." To move the project further along, Frank reached out to an earlier collaborator, Broadway composer Claibe Richardson (*Congo Square*). After a presentation at Carnegie Mellon's first season of *The Showcase of New Plays*, the two writers realized they had the making of a show. The piece was moved further along to The Eugene O'Neill Theatre Conference in Connecticut and later as a workshop at New York's Vineyard Theatre. At the Pittsburgh City Theatre-Hamburg Theatre, the show was produced by then Pyramid Productions (Ted Hoover, Melissa Martin and Tammy Ryan).

"My presenting it now is because the roller coaster view of the US, when I first wrote the piece, resonates, I think, even more today, in these fragmented, surreal times," said Frank. He added, "I also felt it was time to bring attention to the great melodic musical gifts of my late composer collaborator, Claibe Richardson. He was a genius at setting theatre lyrics with melodies that dramatize the dramatic moment and that stick in the need-to-leave-the-theatre-humming-the-melody part of your brain."

This one's for you Claibe...
And for each of us,
living and looking for the hum
in our own Bodoni County.

FG (<http://www.gaglianoriff.com>)



This reading has received generous cooperation and support from the Musical Theatre Artists of Pittsburgh (MTAP), Stephanie Riso, Executive Director and Creative Producer; Jeanne Drennan, Managing Director; and Steve Cuden, Advisor.

MTAP meets monthly between September and May for networking, collaborations, new work development and presentations of work in progress. We are seeking aspiring or established composers, lyricists, librettists, playwrights, performers, professionals, producers and anyone interested in new musical development. To receive regular emails from MTAP about meetings, special events, and opportunities, send an email to mtapgh@gmail.com

PROGRAM SHEET #1 *Front side Right*



Artwork by Richard Price

**“FROM THE BODONI COUNTY
SONGBOOK ANTHOLOGY”
A Musical Revue
(of sorts)**

**Book and Lyrics by Frank Gagliano
Music by Claibe Richardson**

**Free Staged Reading
Produced by John Keating**

**Monday, April 24, 2017
7:30 pm - Carnegie Stage
(Off The Wall Productions)
Carnegie, Pa**

THE BODONI CAST:



JEFFREY HOWELL* (Jonathan Overview, Benjamin Bernhard) Most recently seen at Pittsburgh CLO in *South Pacific*, *Aida*, *Damn Yankees* and at the REP in *Choir Boy* and *Souvenir*. Some favorite CLO shows include *Man of La Mancha*, *42nd Street*, *Singin' in the Rain*, *Sunset Boulevard*, *Jesus Christ Superstar*, *Jekyll & Hyde*, *A Musical Christmas Carol (Bob Cratchit)*, *Beauty and the Beast*, *Bells are Ringing*, *Pajama Game*, and *The Most Happy Fella*. Other credits include *Candide*, *Tigers Be Still*, *Chicago* and "Tribute to Lerner and Lowe" with Marvin Hamlisch and the PSO.



JOE JACKSON* (Harry Grunding, Tom Anderson) Pittsburgh Public Theater: *Guys & Dolls*, *My Fair Lady*, *Camelot* and *Superior Donuts*. Locally he has enjoyed performing in *Parade* (Front Porch Theatricals), *A Musical Christmas Carol*, *Hairspray*, *Oliver*, *Annie*, *Fiddler on the Roof*, *Sunset Boulevard*, *The Producers*, *Jekyll & Hyde*, *The Sound of Music*, and *Jesus Christ Superstar* (Pittsburgh CLO). Joe was also fortunate to work regionally at Arena Stage, Walnut Street Theatre, Fulton Opera House, North Shore Music Theatre, and

he toured nationally with Tommy Tune in *Dr. Doolittle*. An Atlanta native (BFA Ole Miss), he currently teaches at Sewickley Academy. Proud member of AEA.



JILL KEATING* (Mary Beth Scott, Mrs. Carrington, Nurse Vivian Grady) Dance: National Ballet School (Toronto), BA Point Park University, Pittsburgh Ballet Theatre. Musicals: *Big River* (National Tour), Miss Hannigan in *Annie* (Bucks County Playhouse), Frenchy in *Grease* (Theatre-By-The-Sea, RI), Roxie in *Chicago* (City Line, Philadelphia), Doris in *Damn Yankees* (Pittsburgh CLO) Plays: Florence Foster Jenkins in *Souvenir* (Point Park The REP), Miss Dee in *Sharon's Grave* (PICT), Mrs. Hedges in *Born Yesterday* (Pittsburgh Public Theater), Shirley in *Shirley Valentine* (Webb's NY) and *In The Raw* (Bricolage).



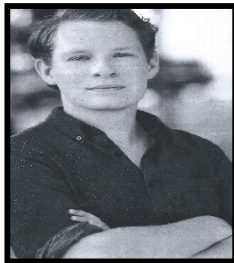
CHRISTINE LAITTA* (Florence Coldwell, Marian Axelbean, Mary Esposito) CLO Cabaret: *Girls Only*, *I Love You You're Perfect...*, *Forbidden Broadway* and *Forbidden Broadway SVU*. Favorites: *The Diary of Anne Frank*, *Lazarus*, *Annie*, *Singin' in the Rain*, *Fiddler on the Roof*, *Carousel*, *To Kill A Mockingbird*, *On The Town*, *The Sound of Music*, PBS pilot "Scientastic!" Chris originated the role of Ms. Frizzle in *The Magic School Bus Live!*, created "TV Tunes Sing-A-Long!" co-authored "The Dramatically Different Classroom."

THE BODONI CAST:



CONNOR McCANLUS* (William Kinsolving, Sonny, Ziggy Kellmer, Eubie Copocolo) was most recently seen in *Lights Out* at Pittsburgh Playwrights. Previous credits *The Merchant of Venice* at PICT Classic Theatre, *Wig Out* at The REP, *The Hound of the Baskervilles* at Kinetic Theater, as well as productions with CLO Cabaret, Bricolage, Barebones, Unseam'd Shakespeare, and Prime Stage. He is an improv comedian and musical improviser who hosts the weekly Pittsburgh Improv Jam at Cabaret at Theater Square with his team *Well Known Strangers*. He can be seen later this summer as Snyder in Disney's *Newsies* at Pittsburgh CLO.

CORWIN appeared in *Big* Theatricals). A *Assassins* (John Name Players, *Playboy of the Much love and family. Proud*



STODDARD (David, Remo Cramer, Ensemble) Recently *River* (Strand Theater) and *Floyd Collins* (Front Porch Point Park University graduate, Pittsburgh credits include Hinckley) with Stage 62, *Viva Los Bastarditos!* with No as well as *The Wild Duck*, *A Streetcar Named Desire*, and *The Western World* with the Conservatory Theatre Company. thanks to all his teachers over the years and his incredible alumni of HSPVA and Perry-Mansfield.



MAGAN DEE YANTKO (Lori, Joy, Ensemble) graduated from Point Park with a B.F.A. Degree in musical theatre. She has been working with Pittsburgh companies such as CLO, Barebones, Playhouse Jr., Prime Stage, and Carrivale Theatrics. She has been honored to play many different characters and some of her favorites include 'Little Red' in Dreamcatchers' production of *Into The Woods* in Miami, FL, Natalie in *Next to Normal*, and Cecily in *The Importance of Being Earnest*. Magan is excited to be a part of this reading and grateful for the support of her friends and family.

*Denotes member of Actors' Equity Association, the labor union representing American Actors and Stage Managers in the United States.

THE BODONI CREATIVE TEAM:



Frank Gagliano (book and lyrics) was part of the 1960's group of Off-Broadway playwrights who revitalized American drama. Edward Albee produced two of Frank's plays, *Conerico Was Here To Stay* and *Night of The Dunces*, at NY's legendary Cherry Lane Theatre. Frank's breakthrough play, *Father Uxbridge Wants to Marry*, was produced at NY's American Place Theatre. Frank has given reading performances around the world of his solo play, *My Chekhov Light*—including the Chekhov Museum, Yalta. In 2007, Frank's play, *Big Sur*, was produced in Beijing, China. Musicals include *Paradise Gardens East* (Off Broadway), *The Prince of Peasantmania* (Milwaukee Rep), *The Resurrection of Jackie Cramer* (Off Broadway), and (with composer Claibe Richardson) *Congo Square* (Pittsburgh Playwrights Theatre Company). For 12 years, Frank was Artistic Director of Carnegie Mellon's *Showcase of New Plays*. In 2013, at the Kennedy Center, Frank was inducted into The College of Fellows of The American Theatre. (<http://www.gaglianoriff.com>)



Claibe Richardson (music) was an American composer spanning four decades. Richardson's first and most notable Broadway theatre score was for the 1971 adaptation of Truman Capote's *The Grass Harp*. Other Broadway credits included incidental music for the revival of *The Royal Family* with Rosemary Harris and Eva Le Gallienne, the revival of *The Philadelphia Story* with Blythe Danner, and the original play *The Curse of an Aching Heart* with Faye Dunaway. Three months before his death in 2003, his final composition, a suite based on *The Grass Harp* and arranged by Jonathan Tunick, Stephen Sondheim's orchestrator, was performed by Skitch Henderson and the New York Pops Orchestra at Carnegie Hall.

Molly Elizabeth McCarter* (Stage Manager) is an Assistant Professor at Carnegie Mellon's School of Drama where she teaches Stage & Production Management. Her credits include work with Berkeley Repertory Theatre, Blue Man Group, The Guggenheim's Works and Process Series, The Maltz Jupiter Theatre, Shakespeare and Company, Yale Repertory Theatre, The New Victory among others. Proud member of Actors' Equity.

John C. Keating (Producer/Playwright/Librettist) Theatre Positions: Roundabout Theatre, Playwrights Horizons (NYC); Plays: *Reservations For Three*, *It's A Long, Long Way To Port Authority*, *Bored of Education*; Musical: *Kitty*; Screenplay: *The Edge*. Member of The Dramatists Guild of America, Inc. and MTAP (Musical Theatre Artists of Pittsburgh). An Irish citizen.

PROGRAM SHEET #2 backside right

Melissa Martin (Director) is an award-winning producer/writer/director working in independent film and theatre. She is the Producer/Writer/Director of *The Bread, My Sweet*. An award winner on the film festival scene, *The Bread, My Sweet* screened at more than twenty festivals, was a featured film in Chris Gore's *Film Festival Survival Guide*, and was released theatrically nation-wide. It was distributed world-wide by Fox International, on DVD by Universal/Screen Media, and on ShowTime, Starz, The Sundance Channel and network television.



Martin is a writer and the director for both *Dog Bytes*, a web series that screened at more than twenty film festivals, among them Berlin, Cape Fear, LAWEBFEST and Cannes. Martin also directed *Flour Baby*, *Paper Umbrellas*—both short films. A pilot, *Come With Me*, based on the web series she directed, *I'll Call You*. Next is a short, *The Cookie Table* and then *Summerlings* a feature film. She is delighted to be working on Frank Gagliano's delightful musical with such a talented group!

Douglas Levine (Music Director) is a pianist, composer, arranger, music director and teacher based in Pittsburgh. His original scores for theater and dance include: *Mercy Train*(Microscopic Opera Company), *Eastburn Avenue*, *Mother Courage and Peer Gynt* (Playhouse, REP), *Deadend* (Attack Theatre), *Mimoun* (Pennsylvania Dance Theatre), *Jane Eyre*, *Pride and Prejudice* and *The Shaughraun* (Pittsburgh Irish and Classical Theatre), *Colorfast* (Pittsburgh International Children's Theater Festival) and *Shakespeare Street* (Playhouse Junior). He has written music or arrangements for companies including the Pittsburgh Cultural Trust, City Theatre, The Warhol, Dreams of Hope, Gateway to the Arts, The Junior Mendelssohn Choir, Renaissance City Women's Choir, Pittsburgh Musical Theater and Opera Theatre of Pittsburgh. Honors include selection for the 2011 Prague Quadrennial and the Frankel Award for artistic achievement.



PROGRAM SHEET #2 front side left

FROM THE BODONI COUNTY SONGBOOK ANTHOLOGY
A MUSICAL REVUE (of sorts)
Book and Lyrics by Frank Gagliano Music by Claibe Richardson

Musical Numbers

Part One

“The Sounds You Hear”	Jonathan Overview
“A Ticket Out”	Florence Coldwell
“Head Waltz”	William Kinsolving
“Another Day Goes By”	Mary Beth Scott
“Marianna”	Harry Grunding
“Losing His Hair”	Sonny
“The Song Takes Over”	David
“And One Night”	Mrs. Carrington
“Mindless Age”	Overview-Ensemble
“Cardboard City Romp”	Tom Anderson
“An Aura of Melancholy ”	Ensemble
“A Ticket Out” (Reprise)	Overview-Ensemble

[There will be one 15-minute intermission.]

Part Two

“An Aura of Melancholy I”	Overview-Ensemble
“It Was in Fact a Deer”	Marian Axelbean
“An Aura of Melancholy II-IV”	Overview-Ensemble
“Mindless Age” (Reprise)	Overview-Ensemble
“I Don’t Give A Shit About Anyone Else But Me”	Ziggy Kellmer
“A Song of Life for Alzheimer Mary”	Nurse Vivian Grady
“Sand Dune Blues”	Joy and Eubie
“November Is My Time”	Benjamin Bernhard
“The Song Takes Over” (Reprise)	Harry, Florence, David
“Bodoni County Finale: An Aura of Melancholy”	(Reprise).....ALL

***With **Off The Wall/Carnegie Stage** currently in production for Sarah Kane’s *4.48 Psychosis*, we are asking all of our guests tonight to refrain from walking to the front stage area where the floor has been painted as part of the set. THANK YOU (John Keating, BODONI Show Producer).

Continue the...Conversation...

Meet and chat with Frank and the creative team about this new musical in the lobby following tonight's performance.

Thank you!



James Rushin, composer, for his generosity in updating and preparing the score for "...Bodoni..."



Virginia and Hans Gruenert and Erika Cuenca for their generous grant from Off The Wall Charitable Trust, enabling us to use their space.



Heidi Nagle, operations manager of off the WALL productions, for her technical and front-of-house assistance.



Molly Elizabeth McCarter and Carnegie Mellon University Drama Department for their rehearsal space.



Vanessa Ramon, production assistant, sophomore CMU.



Stephanie Riso, Jeanne Drennan and Steve Cuden and Musical Theatre Artists of Pittsburgh for their generous support and contribution.



Richard Price for his "Sandrico Presents" design.